



DLM Overview...

- Industry Experience Since 1962
- Extensive Application Experience
- Fully Integrated Manufacturing Facilities
- On-Site Engineering & Customer Support
- National Network of Knowledgeable Sales and Service Representatives
- Superior Structural Construction
- Accepted Nationally by Fortune 500 Companies

- ▶ **Help prevent a truck trailer from rolling**
- ▶ **Available in laminated rubber, molded rubber or molded urethane**
- ▶ **Lightweight and durable**
- ▶ **Available with a chain and optional cradle**
- ▶ **Resistant to extreme weather conditions**
- ▶ **Easy to use**
- ▶ **Meets OSHA standards**
- ▶ **Use in conjunction with RIG-based vehicle restraints**

Wheel Chock Wheel Restraining Unit

Designed, Engineered & Manufactured
in the U.S.A

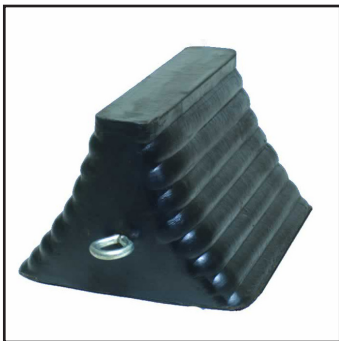


Model 88-8

Model 88-8

- Extra heavy-duty
- Laminated rubber pads assembled on 3/4" (19.1mm) bolts and compressed between 1/4" (6.35mm) steel plates
- Contoured to fit tire
- Fully meets OSHA requirements
- Completely reversible
- Constructed of fabric reinforced rubber pads cut from recycled truck tires
- Available with chain
- Weight: 15lbs (6.80kg) each

* **NOTE:** also available with gripper cleats for better traction in snow, ice, dirt and mud



Model 68-9

Model 68-9

- Molded from a tough fabric reinforced rubber compound
- Well suited for trailer truck and other heavy equipment
- Economical and long lasting
- Easy on macadam surfaces
- Available with chain
- Weight: 10lbs (4.54kg) each



Model 811-7

Model 811-7

- Light weight yet heavy-duty
- Molded urethane chock contoured to fit truck tires
- Designed to grip both the tire and the pavement
- Will not harm macadam
- Weight: 6.5lbs (2.95kg) each

Model	A width	B height	C length	weight	color
88-8	8" (203.2mm)	8" (203.2mm)	8" (203.2mm)	15lbs (6.80kg)	black
68-9	8" (203.2mm)	5 ³ / ₄ " (146mm)	9" (228.6mm)	9lbs (4.8kg)	black
811-7	11 ³ / ₈ " (295.3mm)	8 ¹ / ₄ " (209.6mm)	7 ⁵ / ₈ " (193.7mm)	6.5lbs (2.95kg)	orange

DISTRIBUTED BY:



DLM • Division of Systems, LLC
Germantown, WI 53022

Phone: 800.643.5424 • Email: sales@dlmdocks.com • www.dlmdocks.com