

Gap Sealer (GS) Dock Shelter Installation Instructions

(Right or left — read from outside facing building)

1. **DETERMINE CENTERLINE OF DOOR OPENING ON DOCK FLOOR AND POSITION OF SHELTER OUTER EDGES:** Take 1/2 of the unit width and mark this distance on both sides of the centerline.
2. **ASSEMBLE BRACKETS ONTO SIDE PADS:** Verify the left and right side pads and attach the proper head brackets onto the outside back corner (against the wood) at the top of each pad using flat-head screws. Attach the L-brackets on the outside and inside edges of the pads. Six (6) L-brackets per side pad recommended—one near the top, middle, and bottom (inside and outside). Use more if necessary.
3. **MOUNT SIDE PADS TO THE WALL:** Line up the outside edges of the pads to be vertical against the outside marking. Anchor L-brackets to the wall (anchors not included).
4. **ASSEMBLE HEAD CURTAIN TO HEAD FRAME:** Remove aluminum angle from the frame. Position curtain on the frame and overlay the aluminum angle on top to align holes. Fasten angle, curtain and frame together with lag screws provided (do not over tighten).
5. **MOUNT HEAD FRAME TO WALL:** Place head frame on top of the head brackets attached to the side pads with care taken to avoid damage to extended fiberglass section. At least three (3) anchors (not included) are recommended to mount to the wall—one in the middle and one near each end. Use more if necessary.
6. **ATTACH HEAD FRAME TO HEAD BRACKETS:** Use lag screws provided to screw on the head frame through the head brackets.
7. **ATTACH THE RUBBER SEALS TO THE SIDE CURTAINS:** Follow the included instructions to properly bolt the seal in place.
8. **ATTACH SIDE CURTAINS TO SIDE PADS:** Position curtain on the front face of the side pad. Fold over the Velcro® flaps of the side curtains onto the Velcro® pad, pressing firmly.
9. **ATTACH SIDE CURTAIN TENSION STRAPS:** Place the “S” hook into the grommet on the top inside corner of each side curtain, then screw the loop end of the tension strap onto the inside of head frame so that most of the slack is removed. **Do not stretch the tension strap.** Crimp the “S” hook if desired.
10. **ATTACH HEAD CURTAIN TENSION STRAPS:** Pull the tension strap down to the grommet tab and attach the “S” hook through the open grommet. **Do not stretch the strap or extend the strap upwards as it may cause the head curtain to eventually tear!!** Crimp the “S” hook if desired.
11. **ATTACH DRAFT PADS:** Draft pads have two Velcro® attachment points which connect to the inside face and bottom surface of the side pad.
12. **CAULK BETWEEN HEAD FRAME AND WALL:** Outside edges only. A silicone or butyl rubber caulk is recommended.

HARDWARE PROVIDED:

- 1-5/8 x 5/16-inch Lag Screws - @ Head Curtain, Head Frame, L Brackets
- 1 1/2-inch - 14 Flat Head Screws - @ Head Brackets
- 3 1/2 x 1 1/2 x 3-inch L Brackets - @ Side Pads

SUGGESTED MOUNTING METHODS

(Mounting anchors not included)

CONCRETE BLOCK OR BRICK WALL: Try to hit mortar joints. Use 1/2-inch or 3/8 x 4-inch expansion anchors. Use through bolt fastening (minimum two per frame member) if anchors will not hold—3/8-inch threaded rod is recommended.

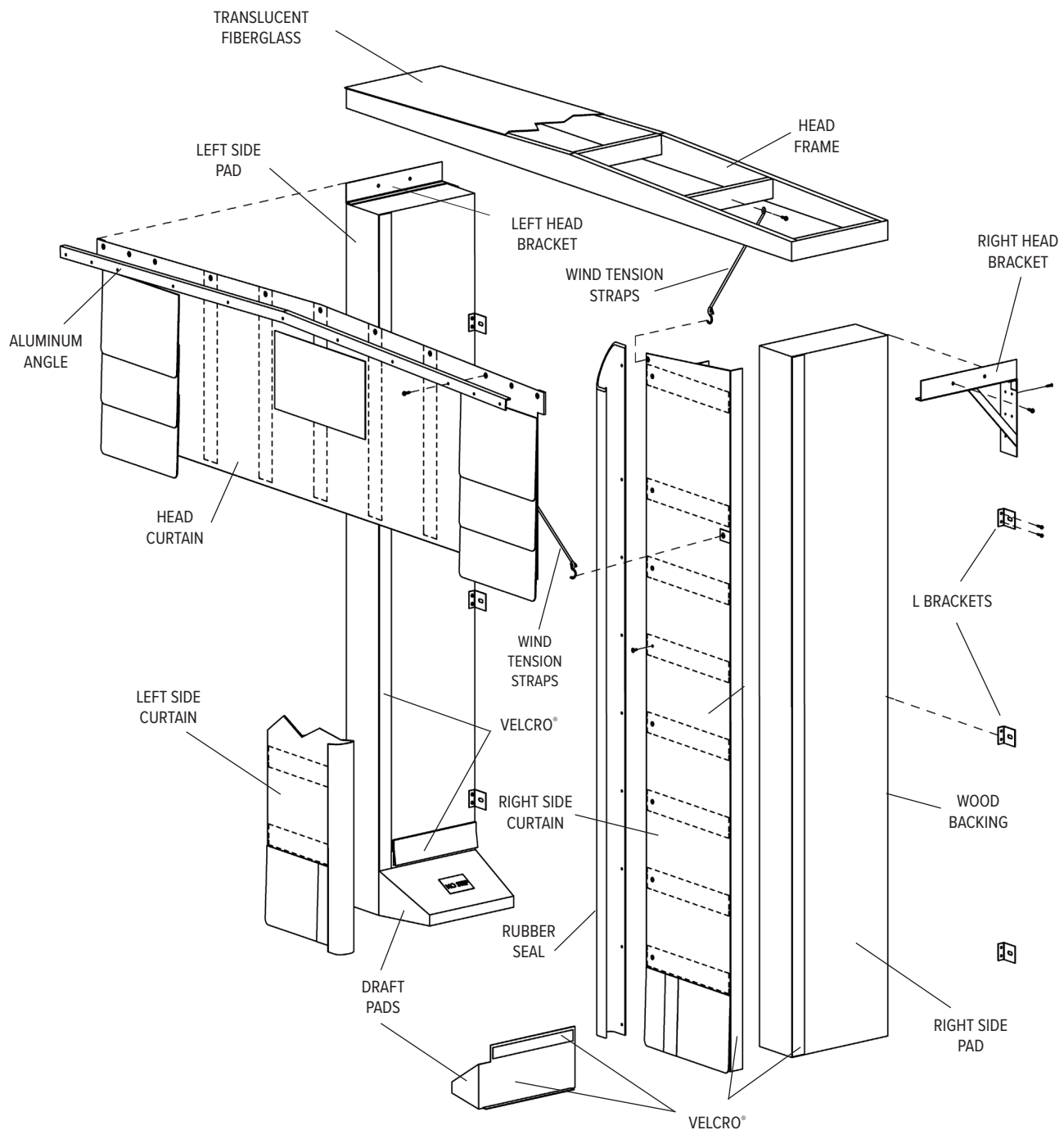
PRECAST CONCRETE: Same as above.

METAL SKIN BUILDING: Through bolt fastening as above. Use a back-up plate (steel or wood) to support bolts, or anchor through existing building girt or purlin when possible.

Gap Sealer (GS) Dock Shelter

Installation Instructions

GS-SERIES TYPICAL ARRANGEMENT

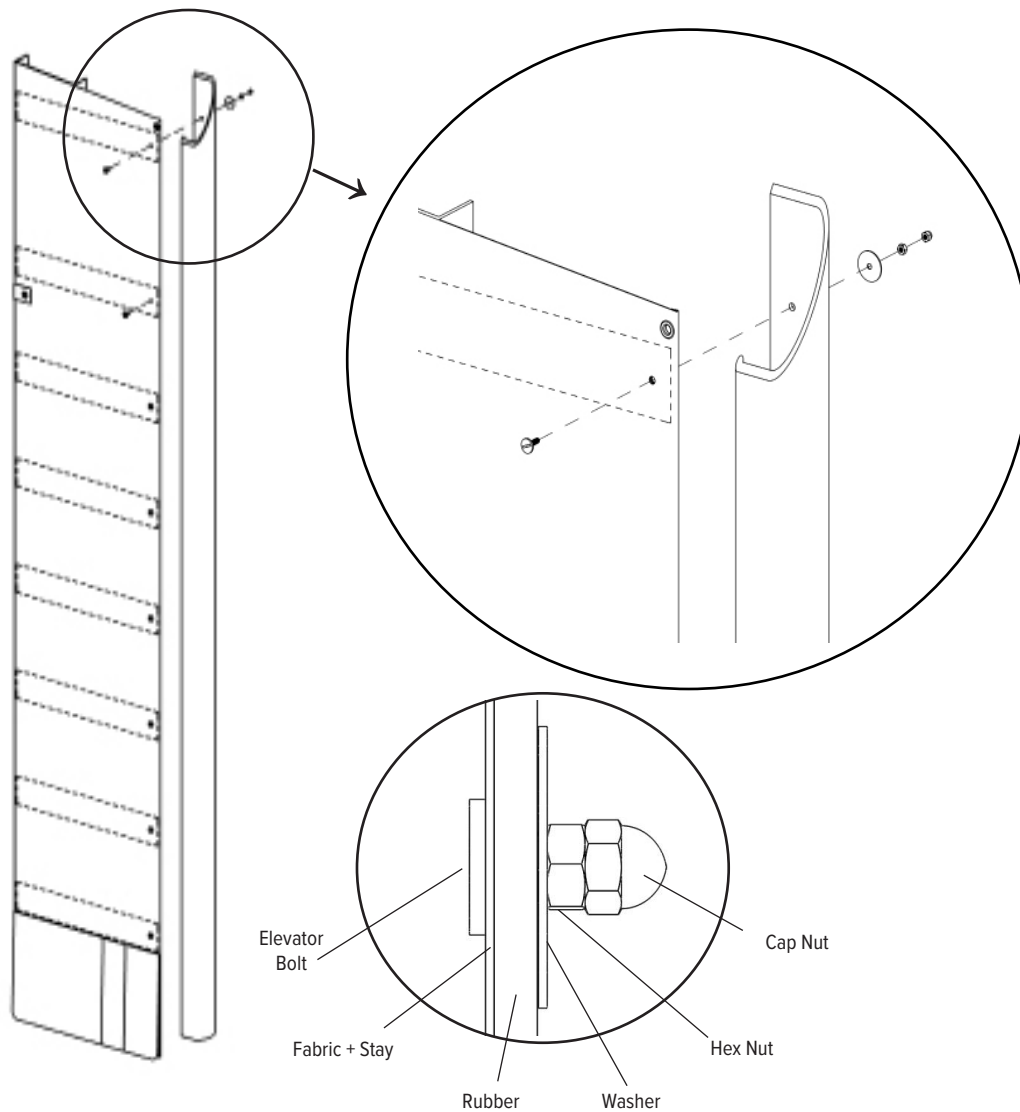


A Division of Systems, LLC

DLM DOCK LEVELER
MANUFACTURING

Gap Sealer (GS) Dock Shelter Installation Instructions

GS-SERIES ATTACHMENT METHOD



1. Line up the holes of the side curtain with the holes of the rubber attachment.
2. Put a 1/4-inch elevator bolt through each aligned hole with the head on the curtain side.
3. Place a washer and a 1/4-inch hex nut onto the bolt and torque tight.
4. Place a 1/4-inch cap nut onto the bolt and torque tightly with the hex nut to lock threads.

W194N11481 McCormick Dr. | Germantown, WI 53022
dlmdocks.com | sales@dlmdocks.com
800-643-5424

*Let DLM help you find the best
solution for your operation.*



dlmdocks.com

*Designed, Engineered, and Manufactured in the U.S.A.
© 2025 Systems, LLC/DLM
Consistent with our policy of continuing product improvement, we reserve the right to
change product specifications without notice or obligation.*

A Division of Systems, LLC

**DLM DOCK LEVELER
MANUFACTURING**

Value Engineered Dock Levelers