

Rain Deflector (RD) Xtreme Installation Instructions

RAIN DEFLECTOR FOR CONCURRENT SHELTER INSTALLATION

(Right or left — read from outside facing building)

1. **INSTALL SHELTER:** Follow the shelter installation instructions. **Do not attach the aluminum angle to the headframe—** instead, use roofing nails through the head curtain to keep it in place. **Make sure to mount the head brackets with the shelter—the headframes will rest on top of the bracket ledge.**
 2. **ASSEMBLE RAIN PAD TO SECOND HEAD FRAME:** Remove aluminum angle from the frame. Position the pad on the frame and overlay the aluminum angle on top to align holes. Fasten angle, pad and frame together with lag screws provided (do not over tighten). Make sure to remove shipping blocks from the ends of headframe.
 3. **MOUNT HEAD FRAMES TOGETHER:** Place second headframe on top of the head brackets with care taken to avoid damage to extended fiberglass section.
- Position frames together so that the head curtain of the shelter is in-between both frames. Drill holes through both frames and head curtain to install at least four (4) sets of through-bolts (HH Cap Screw with two washers and one nut). Use more if necessary. **Avoid drilling through stays!**
4. **ATTACH HEAD FRAME TO HEAD BRACKETS:** Use lag screws provided to screw on the second headframe through the head brackets.
 5. **ATTACH SIDE FLAPS:** Use self-drilling screws to attach the side flaps to the head brackets. Ensure that the stay pocket is mounted to the front of the bracket.
 6. **CAULK BETWEEN HEADFRAMES:** Use flashing and caulk where the headframes meet. Also caulk at the wall and under the aluminum angle. A silicone or butyl rubber caulk is recommended.

HARDWARE PROVIDED:

- 3/8 to 16 x 4-inch Hex Head Cap Screws
- 3/8-inch Fender Washers
- 3/8-inch - 16 Lock Nuts
- Self-Drilling Screws
- Lag Screws

SUGGESTED MOUNTING METHODS

(Mounting anchors not included)

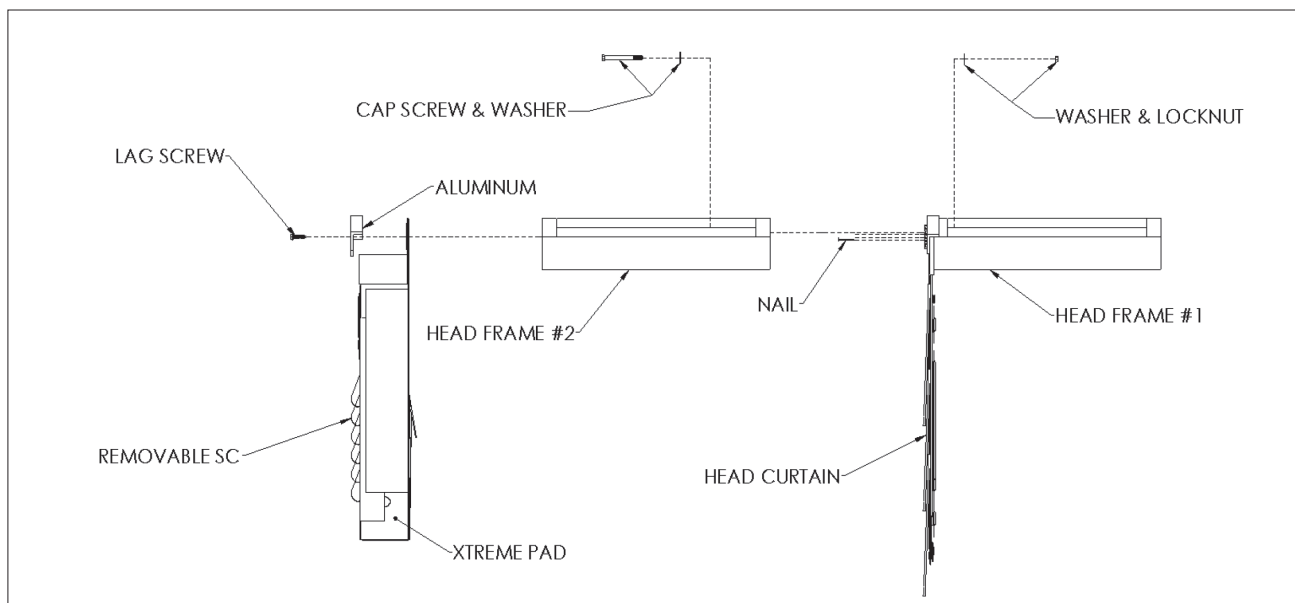
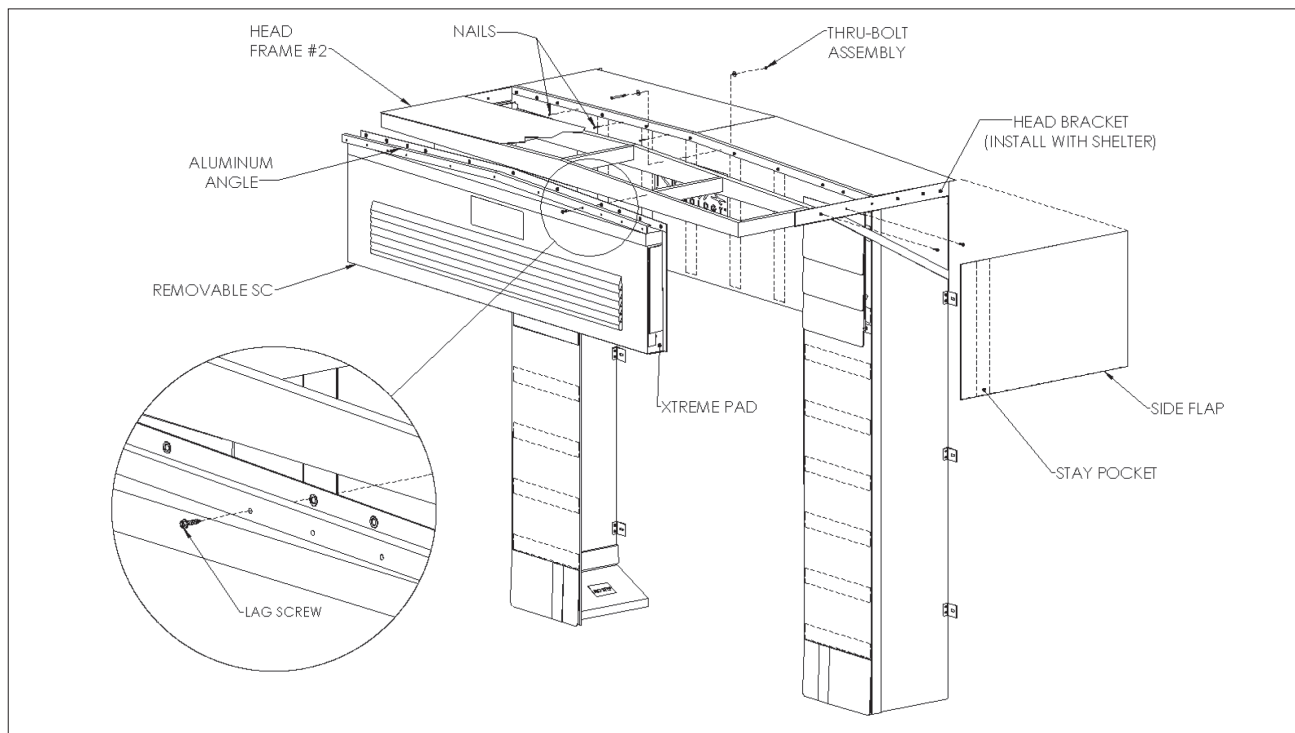
CONCRETE BLOCK OR BRICK WALL: Try to hit mortar joints. Use 1/2-inch or 3/8 x 4-inch expansion anchors. Use through-bolt fastening (minimum two per frame member) if anchors will not hold—3/8-inch threaded rod is recommended.

PRECAST CONCRETE: Same as above.

METAL SKIN BUILDING: Use through-bolt fastening as above, with a backup plate (steel or wood) to support bolts, or anchor through existing building girt or purlin when possible.

Rain Deflector (RD) Xtreme Installation Instructions

RAIN DEFLECTOR TYPICAL ARRANGEMENT *(with GS/SS/RF Series Truck Shelter Shown)*



W194N11481 McCormick Dr. | Germantown, WI 53022
dlmdocks.com | sales@dlmdocks.com
800-643-5424

*Let DLM help you find the best
solution for your operation.*



dlmdocks.com

Designed, Engineered, and Manufactured in the U.S.A.
© 2025 Systems, LLC/DLM
Consistent with our policy of continuing product improvement, we reserve the right to
change product specifications without notice or obligation.

INSTALL INSTCNS RD 07/2025

A Division of Systems, LLC

**DLM DOCK LEVELER
MANUFACTURING**

Value Engineered Dock Levelers