

Rain Deflector (RD) Xtreme Installation Instructions

RAIN DEFLECTOR FOR PRE-INSTALLED SHELTERS

(Right or left — read from outside facing building)

1. **PREPARE SHELTER HEAD CURTAIN:** Use roofing nails through the shelter head curtain to keep it in place. Remove the aluminum angle (if applicable) from the shelter headframe.
2. **FASTEN HEADFRAME BRACKET TO THE WALL:** Position headframe bracket on the wall and next to the back of the shelter sides so that the ledge will be in-line with the bottom of the head frame once installed. Use mounting anchors (not included) to attach to the wall. Use lag screws to attach to the side pad/frame.
3. **ASSEMBLE RAIN PAD TO SECOND HEAD FRAME:** Position the rain pad onto the second frame and overlay the aluminum angle on top to align holes. Fasten angle, pad and frame together with lag screws provided (do not over tighten). Make sure to remove shipping blocks from the ends of the headframe.
4. **MOUNT HEAD FRAMES TOGETHER:** Place second headframe on top of the head brackets with care taken to avoid damage to extended fiberglass section. Position frames together so that the head curtain of the shelter is in-between both frames. Drill holes through both frames and head curtain to install at least four (4) sets of

through-bolts (HH Cap Screw with two washers and one nut). Use more if necessary. **Avoid drilling through stays!**

5. **ATTACH HEADFRAME TO HEAD BRACKETS:** Use lag screws provided to screw on the second headframe through the head brackets (side holes and bottom holes).
6. **INSTALL CABLE ASSEMBLY:** Use mounting anchors (not included) to attach one end of the cable assembly to the wall. Use through-bolts to attach the other end to the front of the second headframe.
7. **ATTACH SIDE FLAPS:** Use TEK screws and nails to attach the side flaps to the headframe & brackets.
8. **CAULK AND FLASH BETWEEN HEADFRAMES:** Use flashing and caulk where the headframes meet. A silicone or butyl rubber caulk is recommended.

HARDWARE PROVIDED:

- 3/8 to 16 x 4-inch Hex Head Cap Screws
- 3/8-inch Fender Washers
- 3/8-inch - 16 Lock Nuts
- Lag Screws
- Cable Clamps
- Self Drilling Screws
- Brackets to attach cable to frame & wall
- 3/16-inch Cable

SUGGESTED MOUNTING METHODS

(Mounting anchors not included)

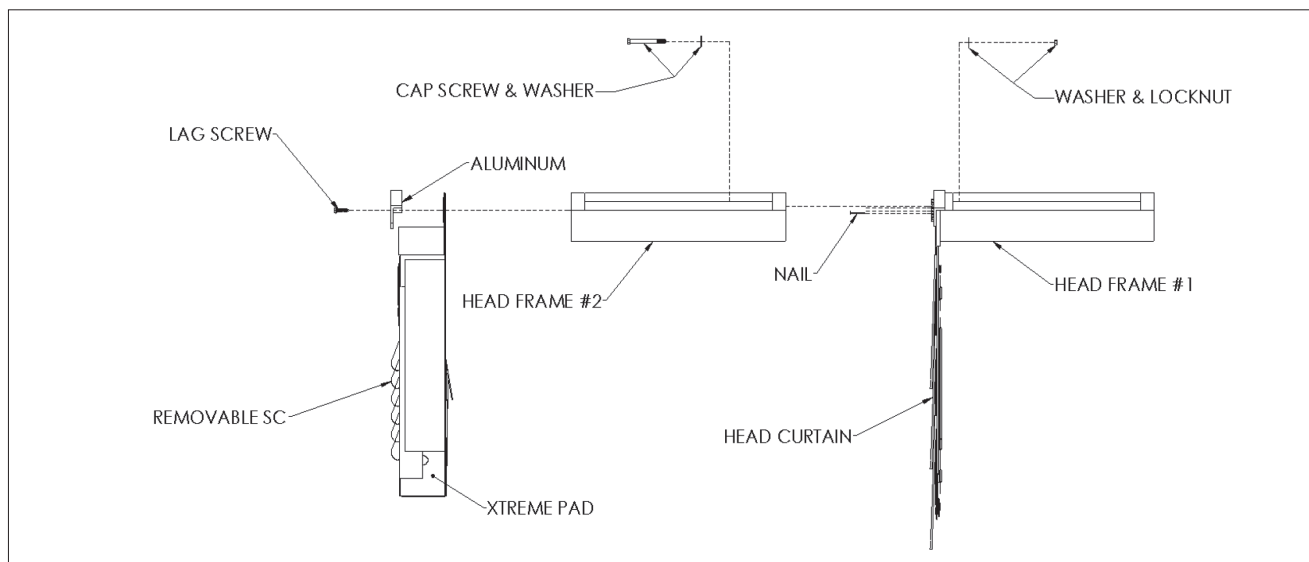
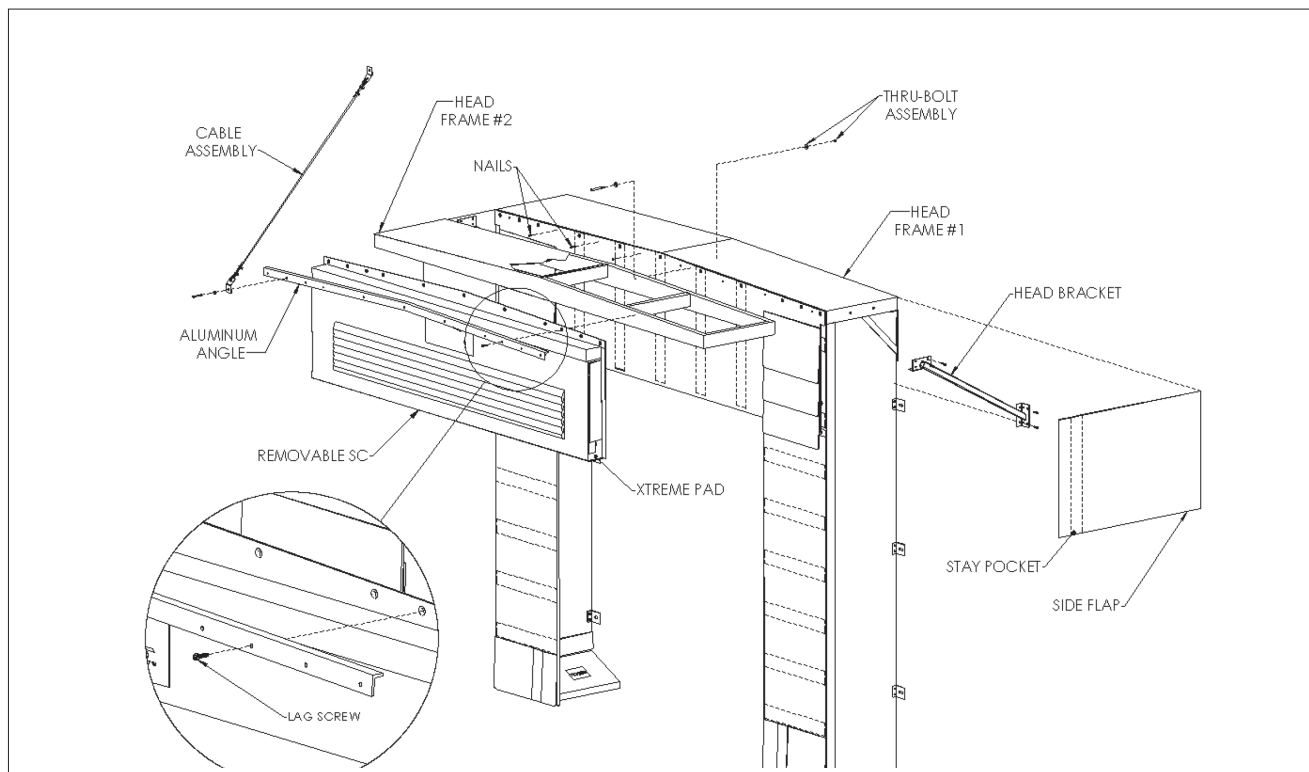
CONCRETE BLOCK OR BRICK WALL: Try to hit mortar joints. Use 1/2-inch or 3/8-inch x 4-inch expansion anchors. Use through-bolt fastening (minimum two per frame member) if anchors will not hold—3/8-inch threaded rod is recommended.

PRECAST CONCRETE: Same as above.

METAL SKIN BUILDING: Use through-bolt fastening as above. Use a backup plate (steel or wood) to support bolts, or anchor through existing building girt or purlin when possible.

Rain Deflector (RD) Xtreme Installation Instructions

RAIN DEFLECTOR TYPICAL ARRANGEMENT *(with GS/SS/RF Series Truck Shelter Shown)*



W194N11481 McCormick Dr. | Germantown, WI 53022
 dlm docks.com | sales@dlmdocks.com
 800-643-5424

*Let DLM help you find the best
 solution for your operation.*



dlmdocks.com

Designed, Engineered, and Manufactured in the U.S.A.
 © 2025 Systems, LLC/DLM
 Consistent with our policy of continuing product improvement, we reserve the right to
 change product specifications without notice or obligation.

A Division of Systems, LLC

**DLM DOCK LEVELER
 MANUFACTURING**

Value Engineered Dock Levelers