

# VHD Series Hydraulic Dock Leveler



**25K - 80K**  
CIR

**6' - 7'**  
WIDTH

**6' - 12'**  
LENGTH

## FEATURES

- Simple, push-button control
- Four-sided box-construction deck assembly
- Low-pressure, 225 PSI hollow-ram hoist cylinder
- Full-hydraulic lip activation
- Internal tamperproof velocity fuse
- Lockout/tagout maintenance strut
- Night locks/cross traffic support
- Motor overload protection
- Low-maintenance design
- CleanSweep™ frame design
- Safety-yellow, full-range toe guards
- Two (2) B410-14 laminated bumpers
- Designed and manufactured in the USA

*\* VHD Series, 6' x 8', 35,000 CIR,  
safety yellow full-range toe guards*

Connect online  
with

**myQ®**  
**Enterprise**

Value Engineered  
Dock Levelers

# VHD Series Hydraulic Dock Leveler

25K - 80K  
CIR

6' - 7'  
WIDTH

6' - 12'  
LENGTH

## OPERATION

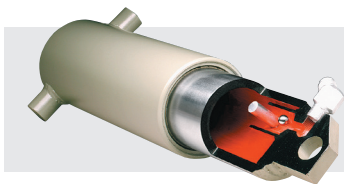
The DLM VHD Series Leveler utilizes a hydraulic operation with push-button activation to raise the leveler and automatically extend the lip. The standard lip is 16", with an operating range of 12" above and below dock level. The platform is designed to compensate for canted truck beds up to 4" and remain flush with the dock floor.

## SAFETY FEATURES

- Tamperproof velocity fuse that will lock the leveler in position (+/-3") if the truck pulls away while in use
- Fluid logic block controls flow of hydraulic fluid
- Built-in lockout/tagout maintenance inspection strut
- Full-range, telescoping toe guards close off sides even in highest position
- Lip keepers for cross-traffic support and automatic night lock security against theft

## VEHICLE RESTRAINTS & ACCESSORIES

For enhanced safety, we recommend all DLM levelers be equipped with light communication, iDock Controls, and vehicle restraints, which help prevent unexpected trailer departure from the loading dock. Safety barriers are also available to prevent forklift trucks from driving over the dock edge.



In-line velocity fuse built into the main lifting cylinder for free fall protection.

## CONSTRUCTION

The VHD Series combines a structural-steel ramp design with a proven hydraulic operation to produce a safe, reliable, yet economic hydraulic dock leveler. All DLM levelers are built with a durable four-sided box construction. The use of structural-steel C-channels or I-beams create substantially more deck support than other levelers.

The lifting cylinder is a unique, low-pressure hollow ram design with hard-chrome plating for longer life. The double-sealed cylinders include rod wipers and are self bleeding. The 1.5 HP motor provides a smooth and quiet operation.



## CONNECTIVITY

Optional iDock® 2.0 Controls with online connection to myQ® Enterprise.



## VHD SERIES COMMON OPTIONS

- 3-wheel offset forklift protection
- Custom interlocking
- Dock alert light communication system
- Dock lights
- Emergency stop button
- Extended lip sizes (18" and 20")
- Foam insulated deck
- Integrated control panel
- Quick cycle lip extend (push button)
- Safety barrier lip
- Vehicle restraint
- Vertical dock bumpers
- Weather seal (brush or rubber)



W194N11481 McCormick Dr. | Germantown, WI 53022  
dlmdocks.com | sales@dlmdocks.com  
800-643-5424



dlmdocks.com

*Designed, Engineered, and Manufactured in the U.S.A.*  
© 2026 Systems, LLC/DLM  
Consistent with our policy of continuing product improvement, we reserve the right to change product specifications without notice or obligation.

A Division of Systems, LLC



Value Engineered  
Dock Levelers